

NiCRO

INDUSTRIAL

Design, Mechanical Engineering & Development Specialists

Company Profile

Nicro strives to understand our customers unique needs, in order to deliver a consolidated innovative solution underpinned by vast engineering experience and a true dedication to service excellence.

Company Divisions



Synergy between our Business Offerings

Each of our divisions was created to work together in a matrix system. Our three core industry areas, Nicro Industrial, Nicro Rail Components and Nicro Alloys focus on solutions for the mining and process-specific industries. Our design-, foundry- and engineering teams provide the expert insight to all the divisions; each with their own area of speciality.

We solve challenges together to offer the best industry solutions to our clients.

Company Overview

Nicro is an innovative, dynamic company that values quality products and long-term customer relationships, coupled with outstanding service and fiscal independence. Our goal is to help our customers achieve a competitive advantage by providing solutions that return superior business results.

We believe in financing our growth through our own earnings and we have consistently done so. Our flat infrastructure, low overheads and diversity of products enable us to weather economic cycles and turn them to our advantage. We're proud of our history of financial stability, innovative patentable future-rich products and last but not least, all the people who work with us. They make our future secure.

Our History

In 1985, the South African industrial market needed to find a solution to importing expensive manufactured components. The founders recognised this need and Nicro was inceptioned as a solution. We were able to lower the cost of manufactured components and improve them. This core value of understanding customer needs and developing unique solutions has been the foundation on which Nicro has been built.

As the requirements of the industry have changed and grown, we've responded by expanding our offering and still ensuring we deliver exceptional expertise in every area. Catering to clients needs from beginning to end, we deliver holistic solutions without reducing expert added value.

Our Directors and Senior Management

Emile van Heerden,

has over 20 years industry experience with expertise in mechanical design and plant engineering.

He has worked as a research engineer in Germany, plant and project engineer and mechanical engineer consultant.

Gerhard (Gerrie) van Rooyen (Jnr.),

is a Chartered Accountant and has in excess of 20 years experience in the professional services, manufacturing and retail sectors as an independent external auditor or financial manager.

Gerhard van Rooyen (Snr.),

has over 40 years experience in the mechanical engineering industry. After completing his B.Sc Eng Mech, he worked as an engineering manager and project manager in the mechanical construction environment as a mechanical engineering consultant. He has been with Nicro since 1996. Gerhard also has a Masters Degree in Business Leadership.

Professional Memberships



SAIMechE
By Knowledge We Advance

- > Stainless Steel Development Association
- < Engineering Council of South Africa
- > SA Pump Makers Association
- < Institute of Mechanical Engineers



Employees

±30



Our Clients

GLENCORE

samancor 

 Ferroglobe

 **IMPLATS**
EXCELLENCE IN PGMs

 **scaw**
METALS GROUP

 **FIRST QUANTUM**
MINERALS

 **GMSA**

 **ASSMANG**

 **ASTRON**
ENERGY

 **AFARAK**
GROUP

FOSKOR 

 **ArcelorMittal**

sasol 

 **ANGLO AMERICAN**

 **OMNIA**

 **LAFARGE**

 **AfriSam**
Build with Confidence

 **PPC**

Our Products & Services

Submerged Arc Furnace Spares

Pumps

Valves

Engineering Services

Castings

Industrial Products

Submerged Arc Furnace Spares



Pressure Rings



Contact Shoes



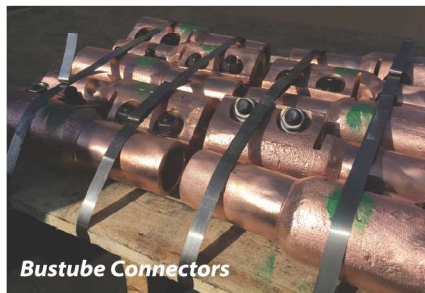
Bustubes

✓ **Products:**

- > Contact shoes
- > Insulation
- > Pressure rings
- > Heat shields
- > Copper bustubes & busbars
- > Copper bustube connectors
- > Stainless steel braided hoses
- > Electrode slipping devices
- > Electrode guide seals
- > Hot feed gate valves
(high temperature & high abrasion resistant)
- > Feed chutes

✓ **Services:**

- > Manufacturing of new furnace electrode column spares
- > Fabrication - stainless steel, mild steel and non-ferrous
- > Repair and refurbishment of furnace electrode column equipment
- > Machining
- > Specialised non-ferrous welding
- > Site services



Bustube Connectors



Busbars

Our Products & Services

Pumps



✓ Products:

- > Centrifugal pumps (process)
- > Centrifugal pump spares
- > Peristaltic pumps
- > Vertical spindle pumps
- > Axial flow pumps

✓ Services:

- > Pump repairs
- > Pump laser alignment
- > Custom design pumps
- > Reverse engineering

Valves



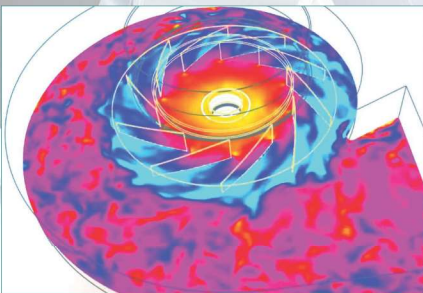
✓ Products:

- > Hot feed gate valve
- > Slurry control valve
- > Ball valve
- > Plug valve
- > Butterfly valve
- > Gate valve
- > Specialized valves
- > Diverter valve

✓ Services:

- > Valve repairs
- > Ball grinding up to 16" ball
- > Custom design valves
(to customer's requirements)
- > Reverse engineering

Engineering Services



✓ Services:

- > Pressure testing
- > NDT testing
- > 3D modeling
- > CAD drawings
- > Infrared thermal scanning
- > FEA & CFD analysis
- > Reverse engineering
- > Stress relieving

Our Products & Services

Castings



✓ Material:

> Cast Iron

- Grey Cast Iron (Flake Graphite Irons)*
- Austinitic Flake Graphite Cast Irons*
- Ductile Cast Iron (Spheroidal Graphite Irons)*
- Ni-Hard Martensitic Cast Irons*
- Hi Chromium White Cast Iron (Martensitic)*
- Nicro Ultra Hard Wear Material*

> Steel

- Carbon Steel*
- Austenitic Manganese Steel*
- Martensitic Low Alloy Wear Resistant Steel*
- Chrome Molly Low Alloy Steel*

> Stainless Steel

- Austenitic Stainless Steel (Corrosion resistant and Hi Temperature applications)*
- Martensitic and Ferritic Stainless Steel*
- Austenitic/Ferritic Stainless Steel - Duplex*

> Super Alloys

- Inconel 657, Hasteloy B/C, Sanicro28*
- Incoloy*

> Non Ferrous

- Copper, Aluminium, Aluminium Bronze*
- Phosphor Bronze, Silicon Bronze,*
- Brass (Copper and Zinc Alloy)*

✓ Services:

- > *Spectrometer material analysis*
- > *Chemical material analysis*
- > *Magma flow simulation*
- > *NDT testing*
- > *Pattern making*
- > *Heat treatment*

Industrial Products



✓ Products:

- > *Rubber bellows*
- > *Steel bellows*
- > *Industrial expansion joints*

✓ Services:

- > *Fabrication - stainless steel, mild steel and non-ferrous*
- > *Heat treatment*
- > *Pressure testing*
- > *NDT testing*
- > *Machining*

Industries We Offer Our Services To

- > *Effluent plants*
- > *Engineering workshops*
- > *Cement industry*
- > *Chemical industry*
- > *Paper mills*
- > *Petrochemical groups*
- > *Power generation plants*
- > *Processing plants*
- > *Marine applications*
- > *Mine processing plants*
- > *Pump & valve manufacturers*
- > *Submerged arc furnace industry*
- > *Railway and rolling stock end users*
- > *Fertilizer plants*
- > *Clay brick manufacturers*

NiCRO

INDUSTRIAL

Design, Mechanical Engineering & Development Specialists

T | +27(0)11 474 2580
E | sales@nicroind.co.za

Roodepoort Office:

Corner Staal Road & Spokeshave Street
Stormill Ext.2, Roodepoort
P.O. Box 607, Maraisburg, 1700
South Africa

NiCRO

ALLOYS

*Design, Manufacturing & Development Specialists
Durban Alloys(Pty)Ltd t/a Nicro Alloys*

T | +27(0)11 474 2580
E | sales@nicroind.co.za

Roodepoort Office:

Corner Staal Road & Spokeshave Street
Stormill Ext.2, Roodepoort
P.O. Box 607, Maraisburg, 1700
South Africa

NiCRO

RAIL COMPONENTS

Design, Manufacturing & Development Specialists

T | +27(0)11 474 2580
E | sales@nicroind.co.za

Roodepoort Office:

Corner Staal Road & Spokeshave Street
Stormill Ext.2, Roodepoort
P.O. Box 607, Maraisburg, 1700
South Africa